

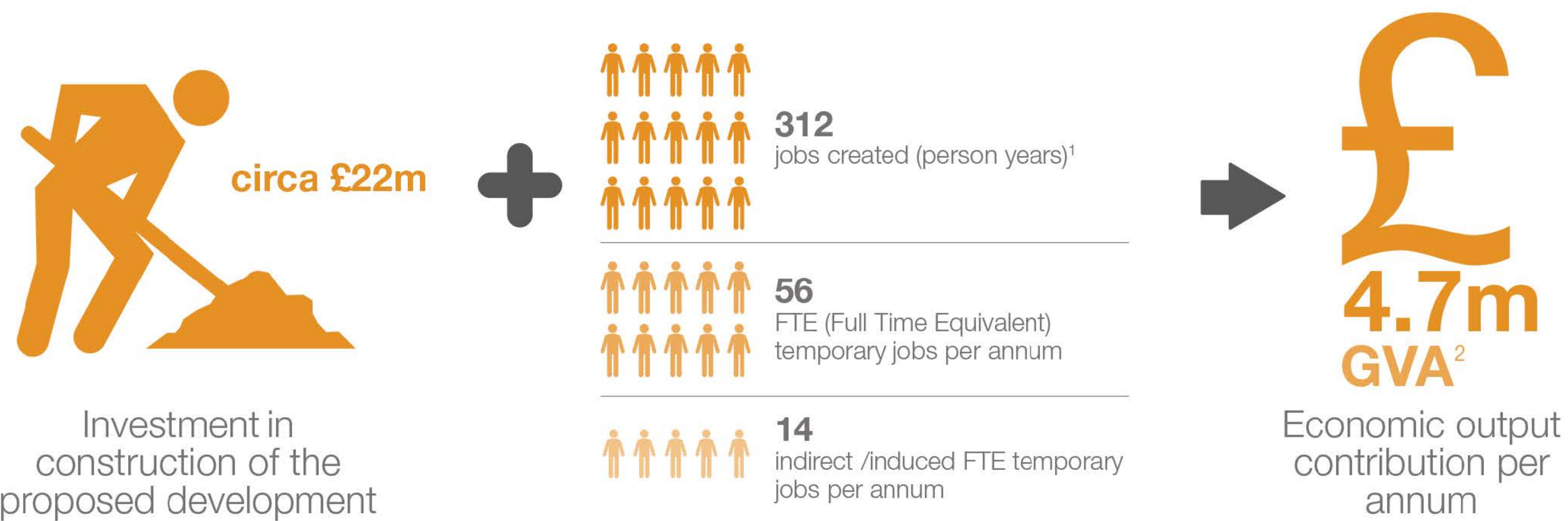
Land off Foldgate Lane Ludlow

THE BENEFITS

Economic Benefits Statement

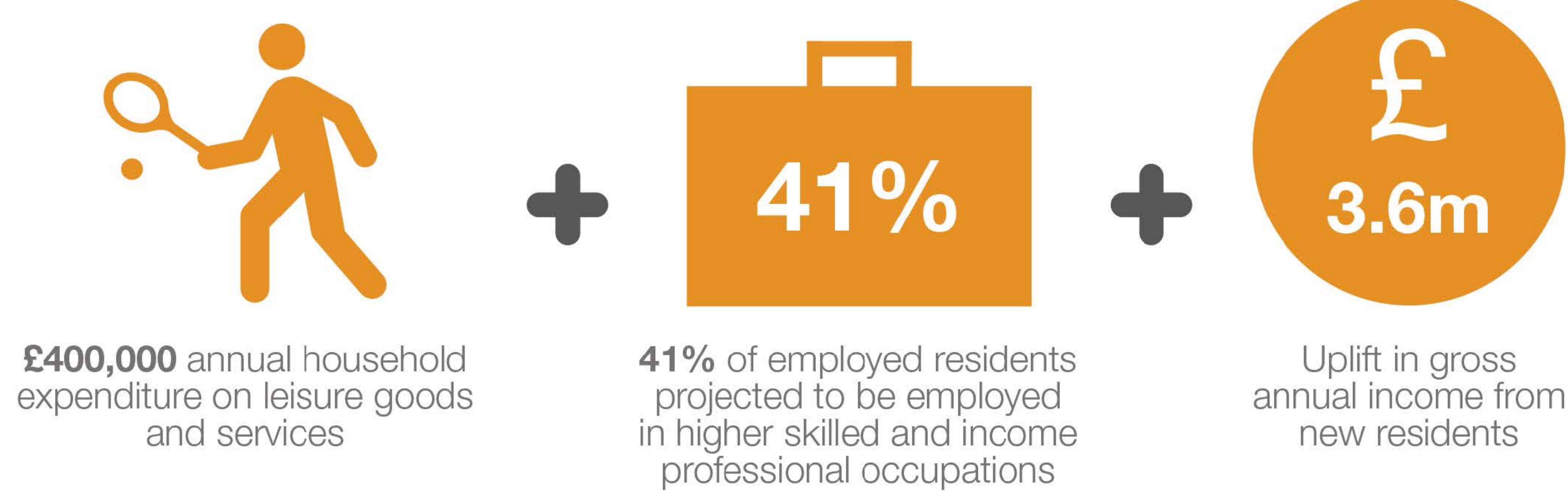
Land off Foldgate Lane, Ludlow

Construction Phase



Lifetime Phase

“163 working age economically active and employed residents estimated to live on the new development”



“Enhance vitality and viability of local retail and service offer and provision within Ludlow and wider Shropshire”



¹A person year is the volume of work that is equal to the output of a single person in a single year (i.e. the volume of construction workers required to deliver the proposed scheme in a single year).
² GVA (Gross Value Added) measure the value of output created (i.e. turnover) net of inputs used to produce a good or service (i.e. production of outputs). It provides a key measure of economic productivity.



NEXT STEPS

We now welcome your views and comments and will take these into account when developing the scheme further. Once this process has been completed, we will submit a planning application to Shropshire Council. Once the application has been submitted, the Council will undertake their own consultation and you will have another opportunity to comment on our final proposals.

To submit your comments please email or write to:

Email: foldgate@turley.co.uk
Post: Foldgate
c/o Turley
9 Colmore Row
Birmingham
B3 2BJ

If you would like a copy of todays exhibition boards, please speak to a member of the team.